

**CORPUS CHRISTI HOUSING AUTHORITY & AFFILIATES**  
**RFP #20005 - HVAC RETROFIT PROJECT - Vendor Pool - Addendum #2**

April 1, 2020

Request For Proposals (RFP) No. 20005 – HVAC Retrofit Project – Vendor Pool is hereby amended as follows:

1. Q - What's the tonnage per apt?  
A - As cited in the Scope of Work, Item #2 - Contractor is responsible for right sizing the HVAC system based on the heating/cooling space.
2. Q – Is Testing and Balancing required?  
A - Testing and balancing is hereby removed from the Scope of Work.
3. Q - Do you have Prints for Heat load Estimate?  
A - No prints are available.
4. Q - If not do you have a building material list?  
A – No building material list is available.
5. Q - Can I do a walk through to take measurements?  
A – Leeward Homes schematics are attached.
6. Q -Am I bidding on the exhaust fans for bathrooms:  
A – No.
7. Q - Am I providing electrician, if so when can I take them to bid the electrical work?  
A – Yes, electrician is required. See item 8.
8. Q – When can our electricians inspect a building to give us a proper bid?  
A- Site visit scheduled for Thursday, April 2 , 2020 at 10:00 am, Leeward Homes located at 2800 Sacky, Corpus Christi, TX 78415.
9. Q - When will plans for apartments be available to properly size system?  
A – Attached.

All other terms and conditions of the Request For Proposals remains unchanged. **The signed addendum must be returned with your RFP submission.**

Acknowledged and accepted:

Company: \_\_\_\_\_

Representative Print Name: \_\_\_\_\_

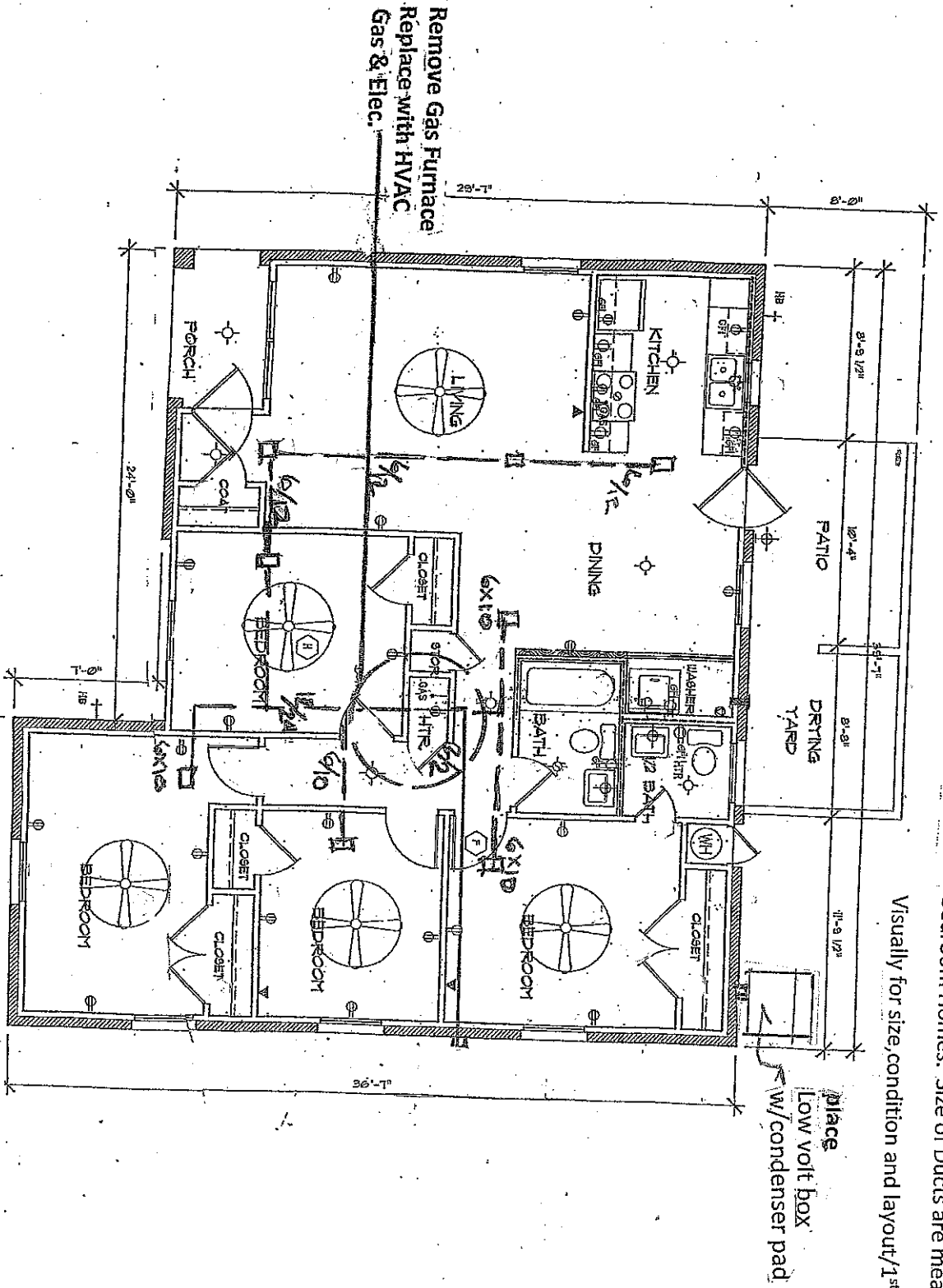
Signature: \_\_\_\_\_

Date: \_\_\_\_\_



**Note :** Attic review of CCHA /CFP Staff Field Study,  
Outlining HVAC Duct Layout of Existing Leeward 4  
Bedroom Homes. Size of Ducts are measured

Visually for size, condition and layout/1<sup>st</sup> floor registers.



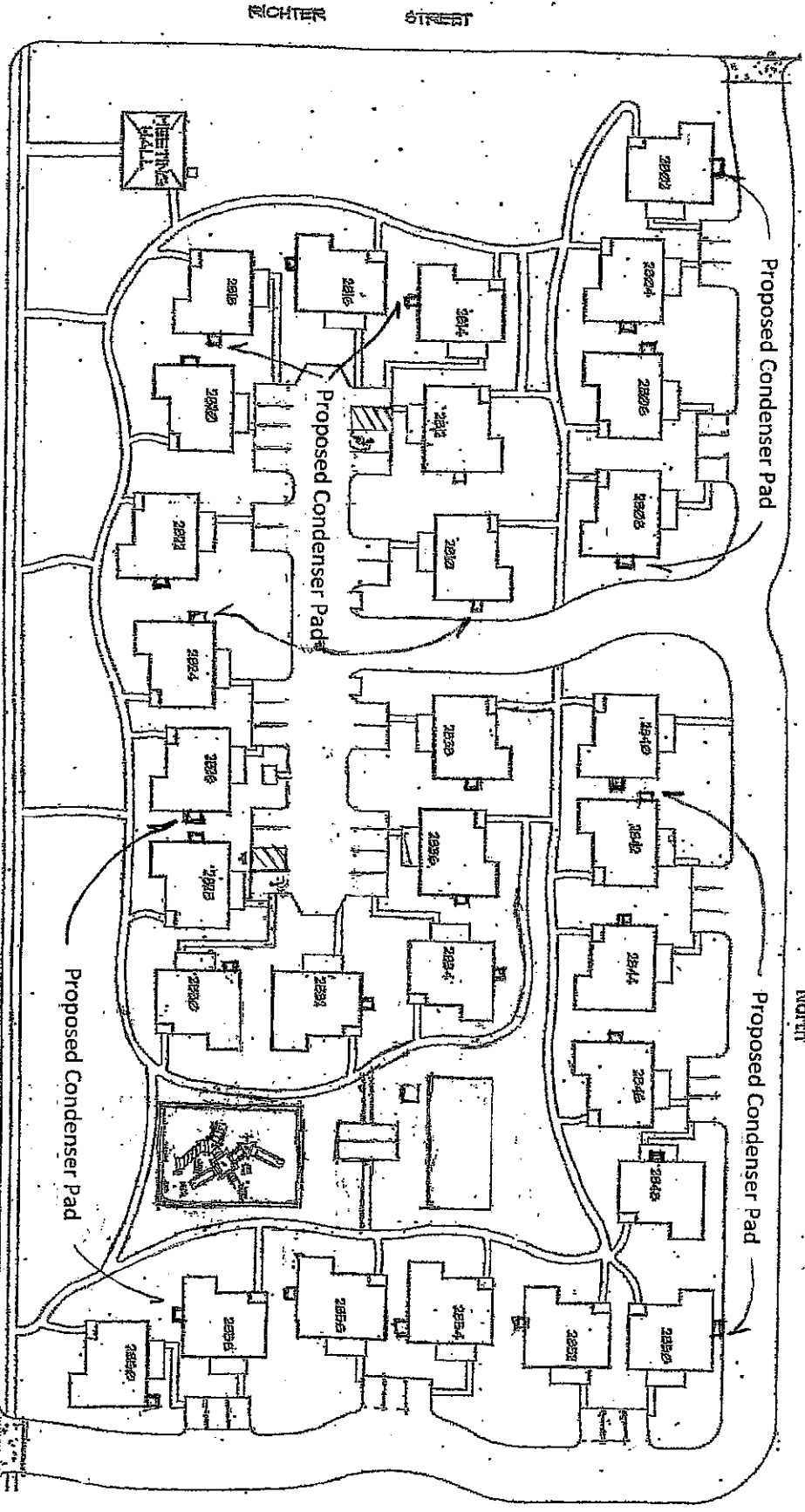
Typical Leeward Home / 4 Bedroom Units

Proposed HVAC System

Scale 1/8" = 1'

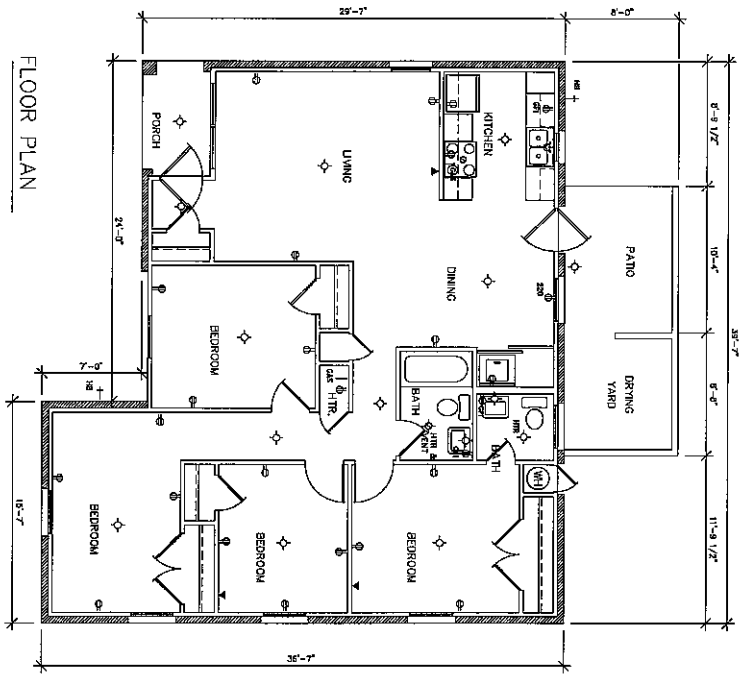
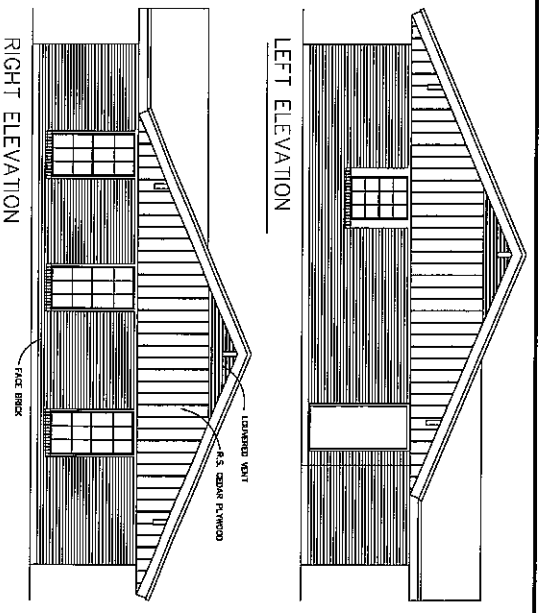
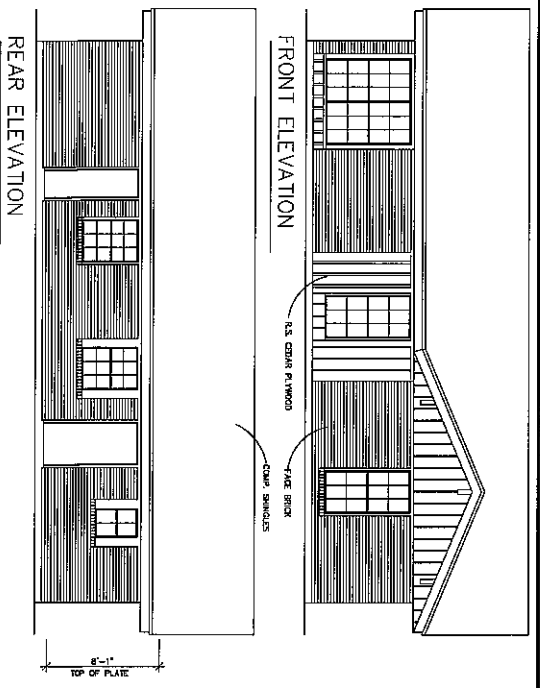
**LEeward HOMES TEX 8-10B**

North

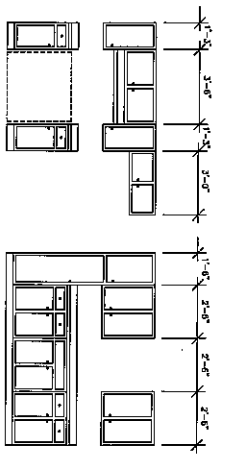


**Leeward Homes Site Plan  
Proposed HVAC Condenser Pads/Units**

N.T.S.



FLOOR PLAN



CABINET ELEVATIONS

SCALE: 3/8"=1'-0"

LEGEND

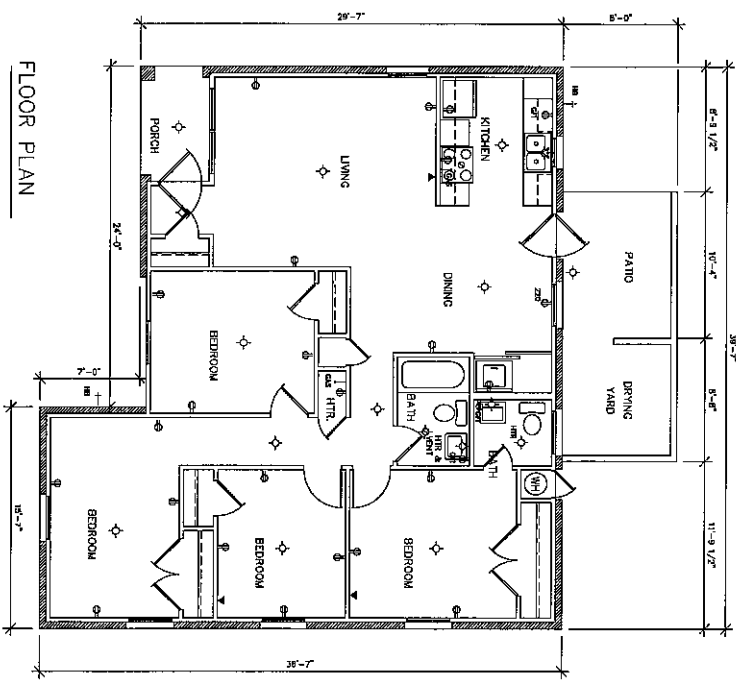
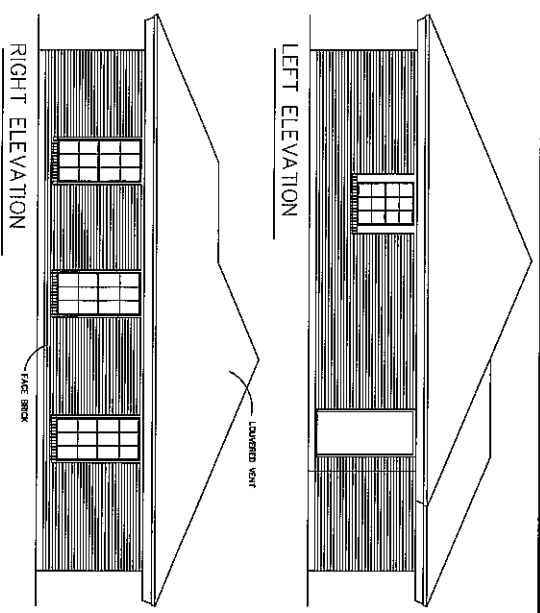
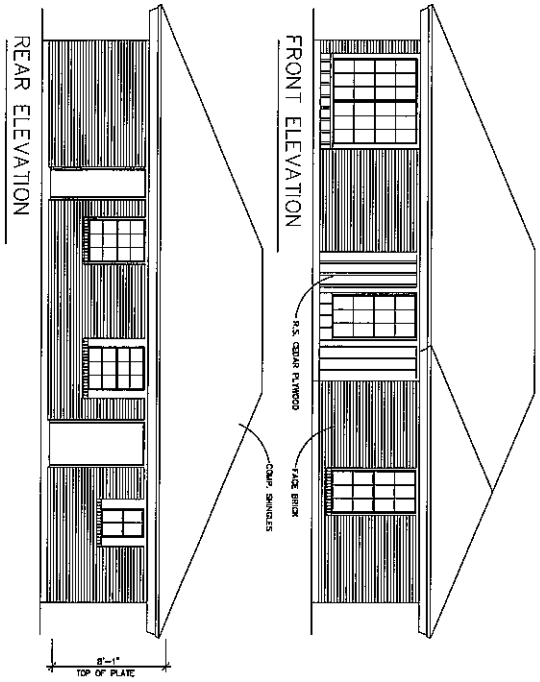
- ◆ LIGHT FIXTURE
- ⊙ 220 VOLT RECEPTACLE OUTLET
- ⊙ DUPLEX RECEPTACLE OUTLET
- ⊙ GROUND FAULT INTERRUPTER
- ⊙ TELEPHONE
- ◆ HEATER
- ⊙ FAN
- ⊙ GAS VALVE
- ⊙ HOSE BIBB

BUILDING TYPE A-RIGHT

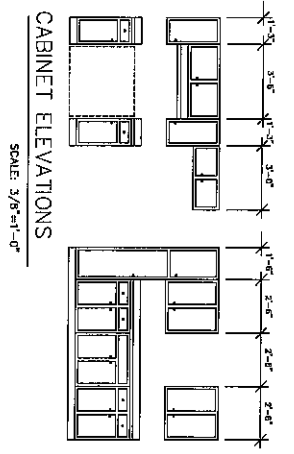
SCALE: 1/4"=1'-0"



HOUSING AUTHORITY OF THE CITY OF CORPUS CHRISTI	
TEX 8-108 LEBNARD HOMES	
"AS BUILT"	
BRIGHT-DYKEMA'S ARCHITECTS	
DIRECTOR LABEL	6-10807
DESIGN	APRIL 20, 1982
REVISED	
REVISION	
REVISION	
SHEET NUMBER	7
OF	12



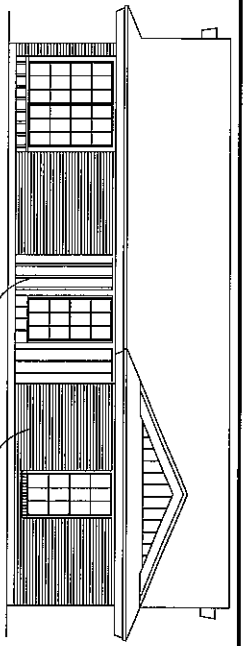
FLOOR PLAN



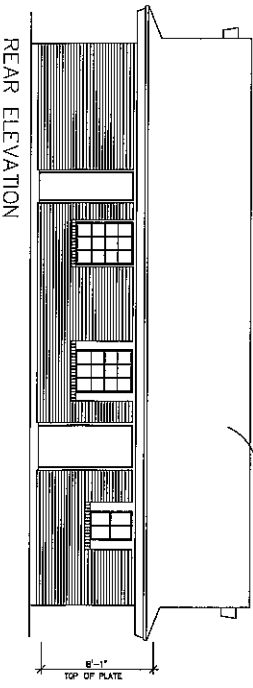
- LEGEND**
- ◇ LIGHT FIXTURE
  - ⊙ 220 VOLT RECEPTACLE OUTLET
  - ⊕ DUPLEX RECEPTACLE OUTLET
  - ⊖ GROUND FAULT INTERRUPTER
  - ☎ TELEPHONE
  - ◇ HEATER
  - ⊙ FAN
  - ⊕ GAS VALVE
  - ⊖ HOSE BIBB



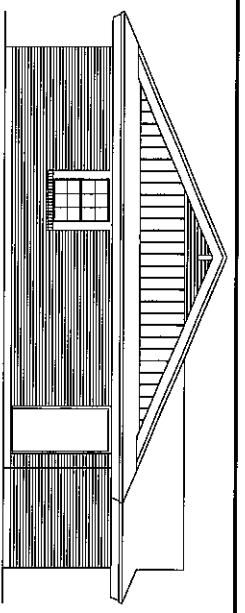
HOUSING AUTHORITY OF THE CITY OF CORPUS CHRISTI	
TEX 8-10B LEONARD HOMES	
"AS BUILT"	
BRIGHT-DYKEMAS, ARCHITECTS	
DRAWN BY	SHEET NUMBER
APRIL 20, 1962	12
REVISIONS	
REVISION	



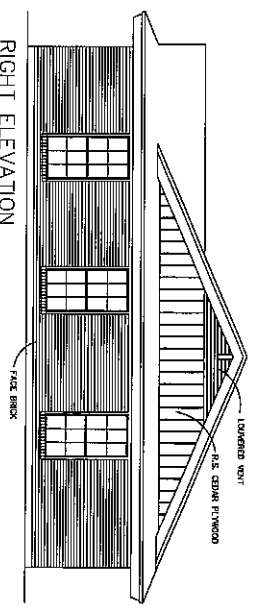
FRONT ELEVATION



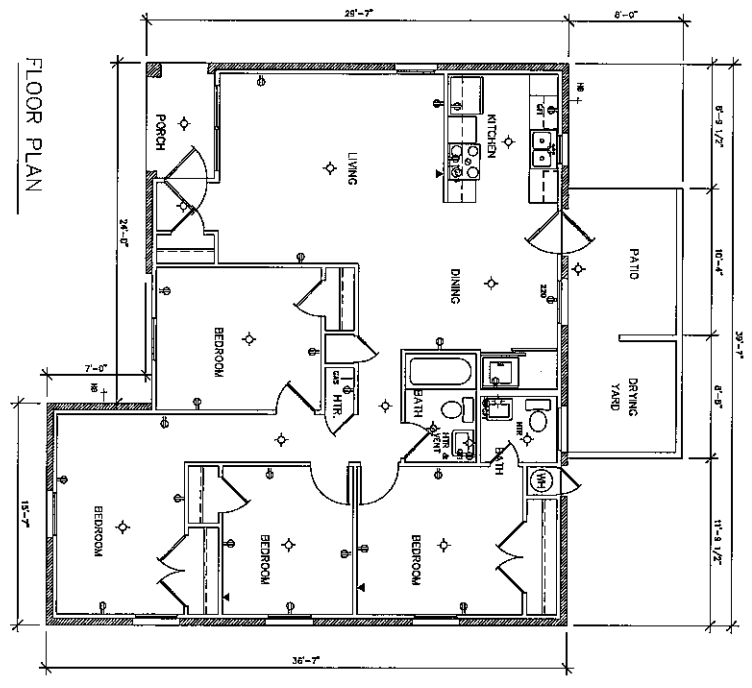
REAR ELEVATION



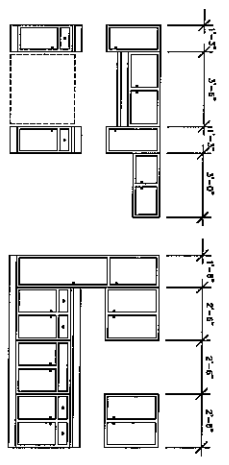
LEFT ELEVATION



RIGHT ELEVATION



FLOOR PLAN



CABINET ELEVATIONS

SCALE: 3/8" = 1'-0"

LEGEND

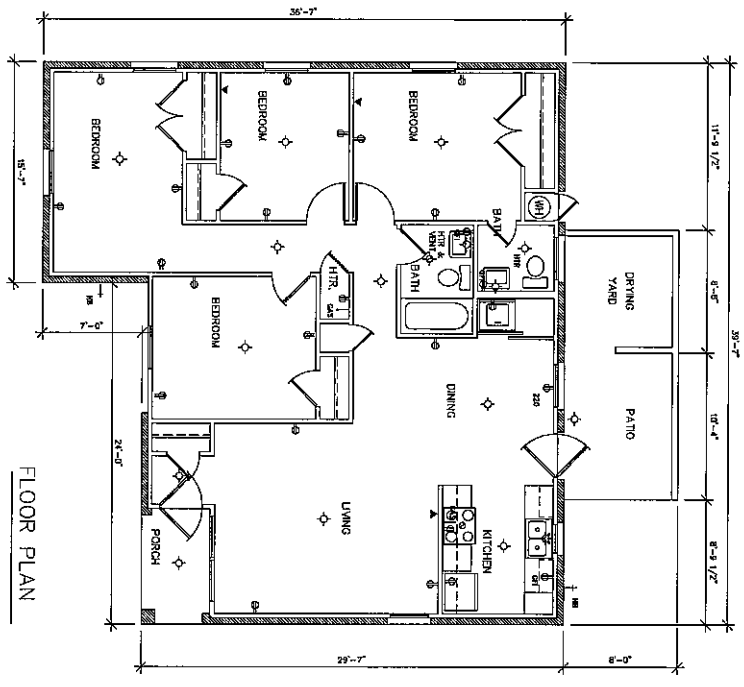
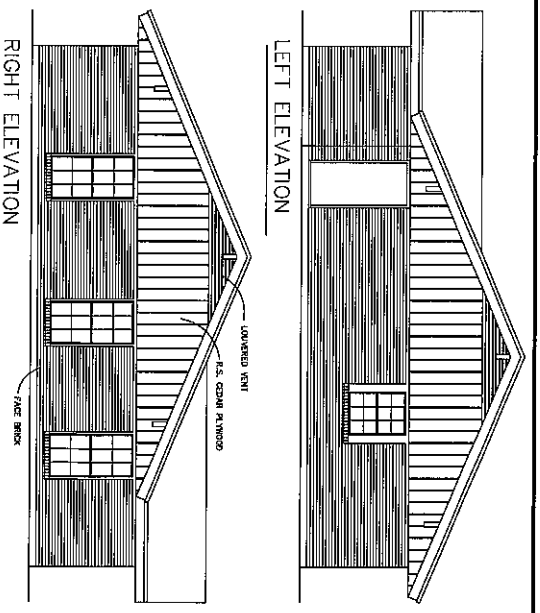
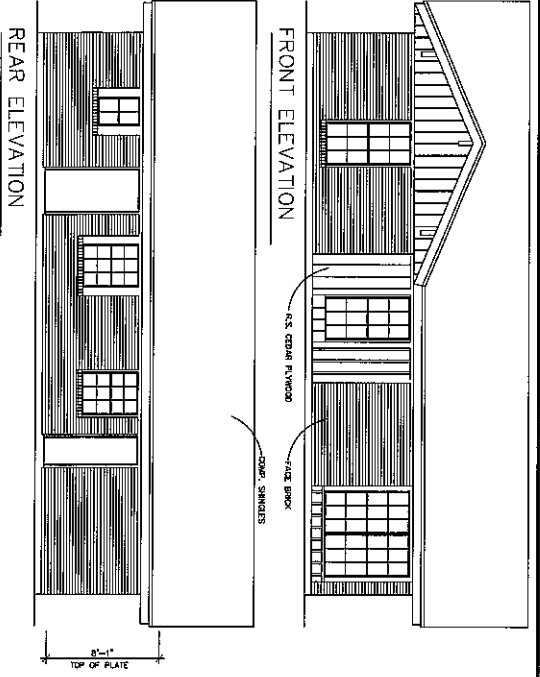
- ◆ LIGHT FIXTURE
- 220 220 VOLT RECEPTACLE OUTLET
- 220 DUPLEX RECEPTACLE OUTLET
- 220 GROUND FAULT INTERRUPTER
- 220 TELEPHONE
- ◆ HEATER
- FAN
- GAS VALVE
- HOSE BIBB

BUILDING TYPE C-RIGHT

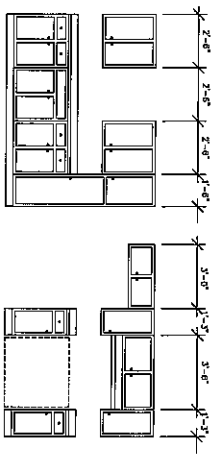
SCALE: 1/4" = 1'-0"



HONORARY ARCHITECT OF THE CITY OF CORPUS CHRISTI	
TEX B-108 LERWARD HOMES	
AS BUILT	
BRIGHT+DYKEMAS ARCHITECTS	
DESIGNED BY	BRIGHT+DYKEMAS ARCHITECTS
DATE	APRIL 20, 1982
PROJECT NO.	12
REVISION	
SHEET NUMBER	9 OF 12



FLOOR PLAN



CABINET ELEVATIONS  
SCALE: 3/8\"=1'-0"

LEGEND

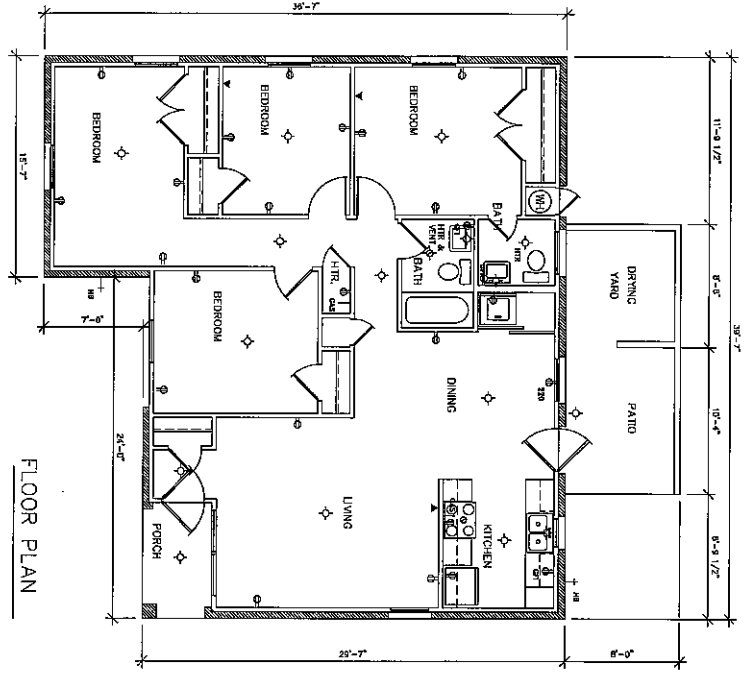
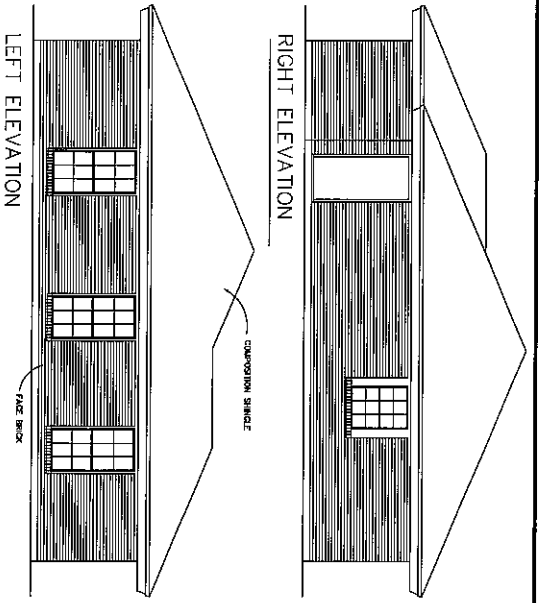
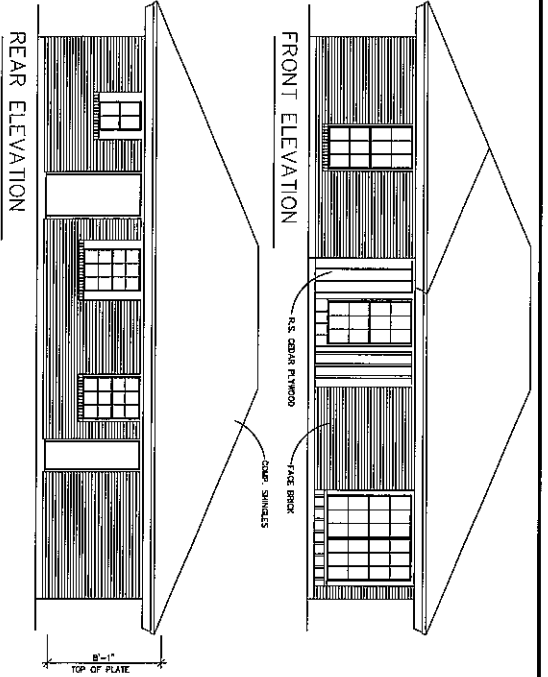
- ◊ LIGHT FIXTURE
- ⊙ 220 VOLT RECEPTACLE OUTLET
- ⊙ DUPLEX RECEPTACLE OUTLET
- ⊙ GROUND FAULT INTERRUPTER
- ▲ TELEPHONE
- ⊙ HEATER
- ⊙ FAN
- ⊙ GAS VALVE
- ⊙ HOSE BIBB

BUILDING TYPE A-LEFT

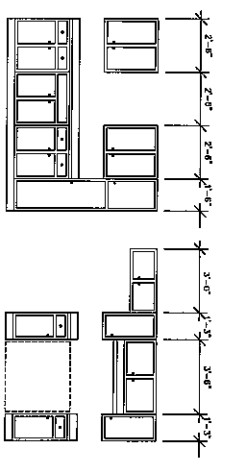


SCALE: 1/4\"=1'-0"

HOUSING AUTHORITY OF THE CITY OF CORPUS CHRISTI	
TEX 8-108 LEEWARD HOMES	
"AS BUILT"	
BRIGHT+DYRENAS, ARCHITECTS	
DIRECTOR	5-10872
DESIGNED	APRIL 26, 1982
REVISION	SHEET NUMBER
10	12



FLOOR PLAN



CABINET ELEVATIONS

SCALE: 3/8"=1'-0"

LEGEND

- ◇ LIGHT FIXTURE
- ⊙ 220 VOLT RECEPTACLE OUTLET
- ⊕ DUPLEX RECEPTACLE OUTLET
- ⊖ GROUND FAULT INTERRUPTER
- ⚡ TELEPHONE
- ⊠ HEATER
- ⊙ FAN
- ⊖ GAS VALVE
- ⊖ HOSE BIBB

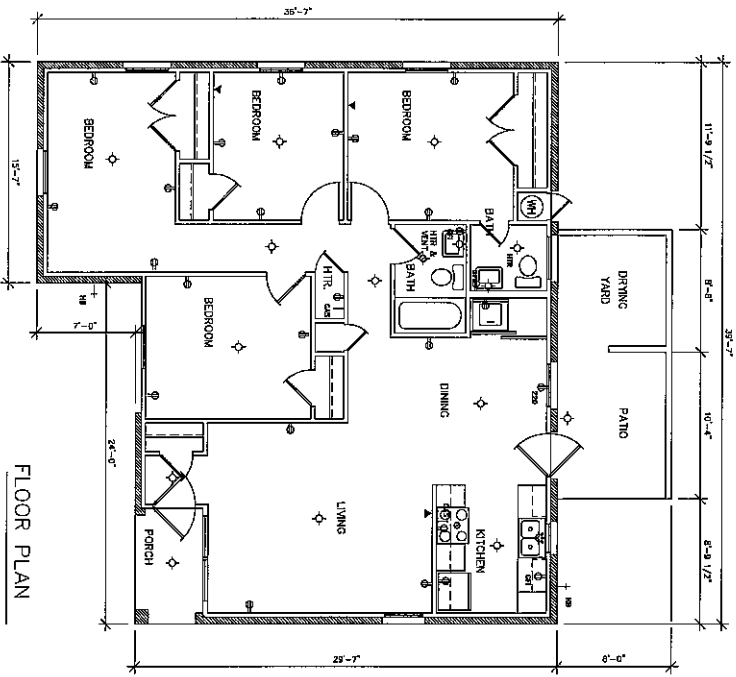
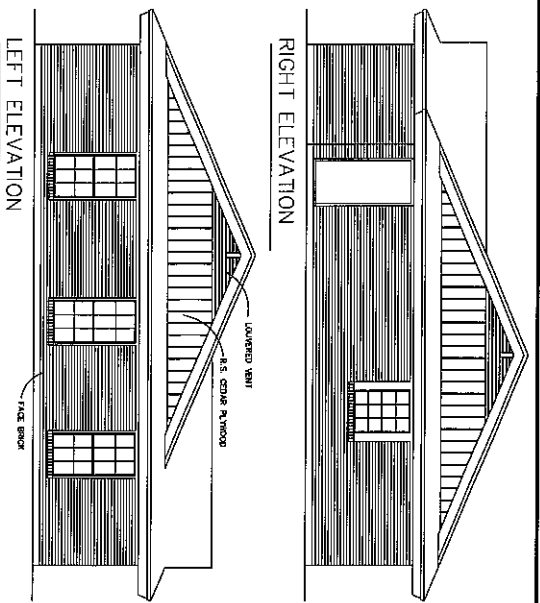
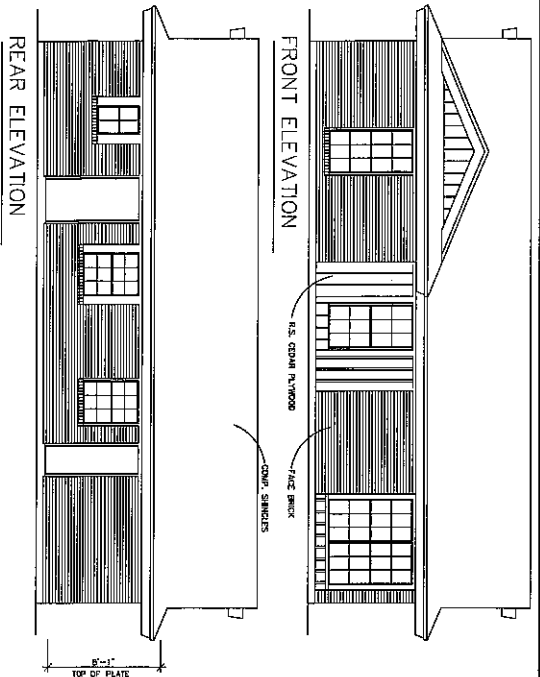
BUILDING TYPE B-LEFT

SCALE: 1/4"=1'-0"

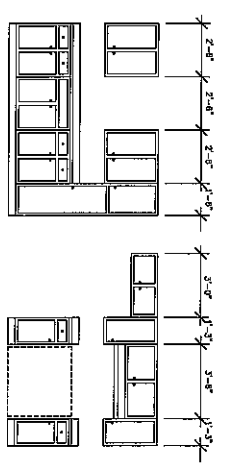


HOUSING AUTHORITY OF THE CITY OF CORPUS CHRISTI	
TEX 8-108 LEBWARD HOMES	
"AS BUILTS"	
BRIGHT-DYKEMAS ARCHITECTS	
DIRECTOR LABEL:	5-108123
DESIGNED:	2006.03.18/22
REVISED:	-
DATE:	-
SHEET NUMBER:	11
TOTAL SHEETS:	12



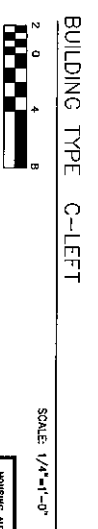


FLOOR PLAN

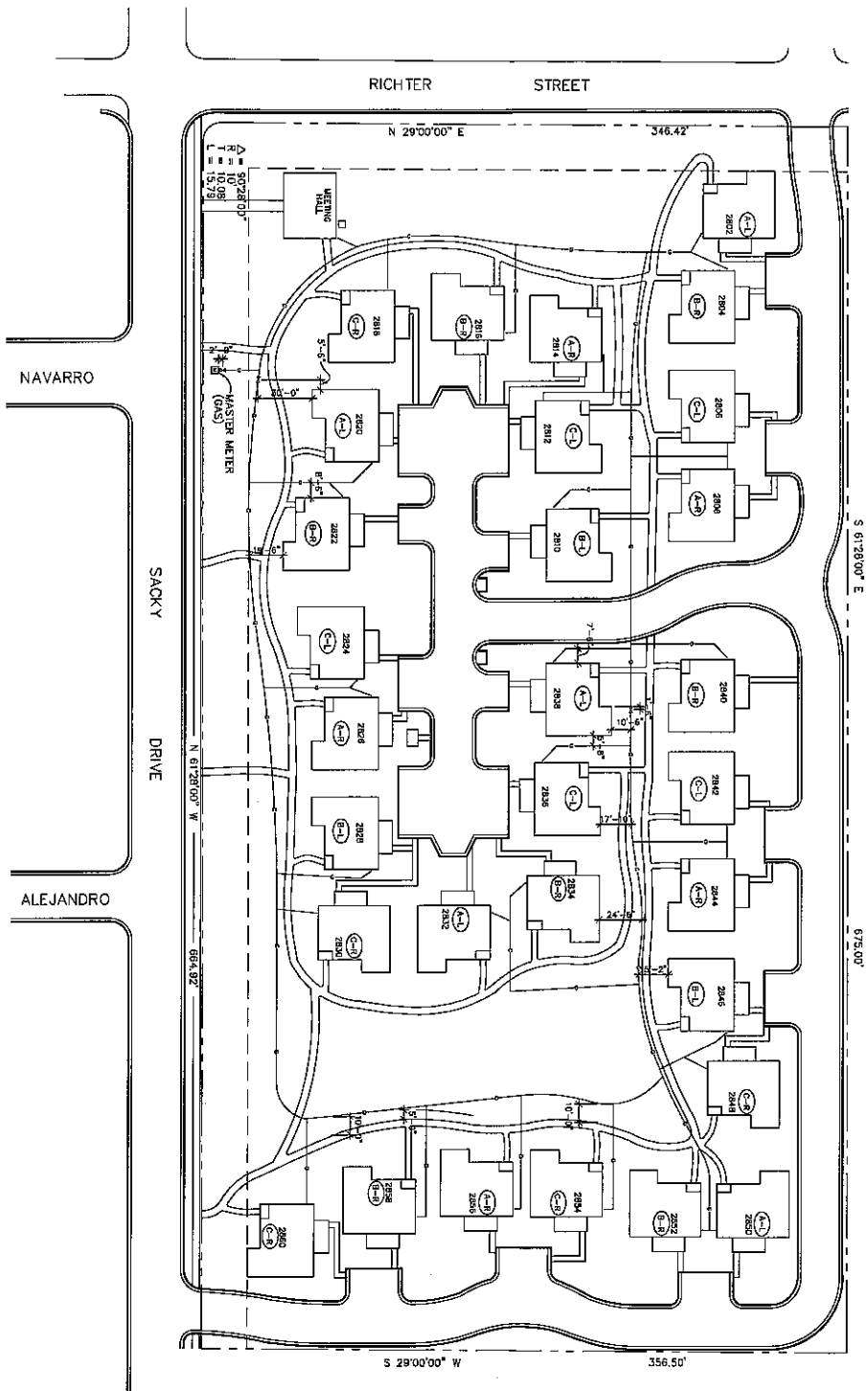


CABINET ELEVATIONS  
SCALE: 3/8" = 1'-0"

- LEGEND**
- ⊕ LIGHT FIXTURE
  - ⊕ 220 VOLT RECEPTACLE OUTLET
  - ⊕ DUPLEX RECEPTACLE OUTLET
  - ⊕ GROUND FAULT INTERRUPTER
  - ⊕ TELEPHONE
  - ⊕ HEATER
  - ⊕ FAN
  - ⊕ GAS VALVE
  - ⊕ HOSE BIBB



HOUSING AUTHORITY OF THE CITY OF CORPUS CHRISTI	
TEX B-108 LEONARD HOMES	
BRIGHT+DYKEMAN ARCHITECTS	
PROJECT LABEL	B-108/19
REVISION	12
DATE	12
REVISED	12
SHEET NUMBER	12



SITE PLAN - GAS DISTRIBUTION



SCALE: 1"=30'

LEGEND

- WATER METER
- ⊗ GAS METER
- CLEAN OUT
- WATER SERVICE
- VALVE
- STOPPED UP
- WATER LINE
- GAS LINE
- SANITARY SEWER
- STORM DRAIN INLET

HOUSING AUTHORITY OF THE CITY OF CORPUS CHRISTI	
TEX 9-108 LEONARD HOMES	
"AS BUILTS"	
BRIGHT+DYKENS, ARCHITECTS	
DESIGNED BY	E. JENSEN
REVISED	APRIL 20, 1992
SHEET NUMBER	
12	OF
12	

# "AS BUILT" DRAWINGS

THE HOUSING AUTHORITY OF THE CITY OF CORPUS CHRISTI  
P.O. BOX 7019 CORPUS CHRISTI, TEXAS 78467-7019  
HENRY FLORES, EXECUTIVE DIRECTOR

PROJECT:

## LEEWARD HOMES

PHA PROJECT NO. TX 8-10B  
2800 BLOCK OF SAGKY AT RICHTER  
CORPUS CHRISTI, TEXAS

### DRAWING INDEX

- 1 DRAWING INDEX SHEET
- 2 SITE PLAN - SEWER & STORM DRAINAGE DISTRIBUTION
- 3 SITE PLAN - WATER DISTRIBUTION
- 4 SITE PLAN - GAS DISTRIBUTION
- 5 SITE PLAN - SEWER, WATER, GAS & STORM DRAINAGE DISTRIBUTION
- 6 SITE PLAN - ELECTRICAL DISTRIBUTION
- 7 BUILDING TYPE A-RIGHT
- 8 BUILDING TYPE B-RIGHT
- 9 BUILDING TYPE C-RIGHT
- 10 BUILDING TYPE A-LEFT
- 11 BUILDING TYPE B-LEFT
- 12 BUILDING TYPE C-LEFT

### 1991 BOARD OF COMMISSIONERS

KAY WHITE	CHAIRMAN
DR. ARTURO GUTIERREZ	VICE-CHAIRMAN
REV. ERNEST BENNETT	MEMBER
JUDY HALE	MEMBER
EDUARDO LOPEZ	MEMBER
HENRY FLORES	EXECUTIVE DIRECTOR

### CHRONOLOGY

ORIGINAL PROJECT DATE: MARCH 29, 1972

"AS BUILT" DATE: APRIL 20, 1992

"AS BUILT" REVISION DATE: \_\_\_\_\_

ORIGINAL ARCHITECT:

ROBERT V BUCK & ASSOCIATES

704 GPM LIFE BUILDING SAN ANTONIO, TEXAS 78216

"AS BUILT" DRAWINGS BY:

BRIGHT + DYKEMAS ARCHITECTS, INC.

915 KINNEY AVENUE CORPUS CHRISTI, TEXAS 78401  
512-882-8171 FAX NO. 512-884-9358